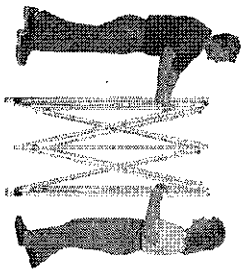


INSTRUCTIONS

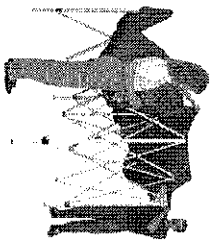
Please read each step before you attempt to set up.
Save these instructions for future reference.

HOW TO SET UP

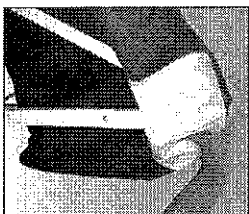
***Note: First Time Attachment is Required.** Top and frame are shipped separately to avoid damage. A first time set up requires that top be bolted on to the frame. This first time set up takes longer than future set ups. Once top is permanently attached to frame, set up and take down are easily accomplished within seconds.



1. Place your E-Z UP® frame in the center of area to be sheltered. With partner on opposite side, grasp two outer legs, slightly lift off ground and step backwards, stopping at full arms' length - approximately 3/4 it's total size.



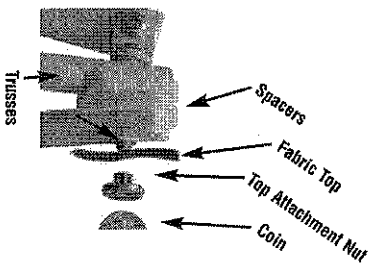
***2.** Gently unfold the fabric top and place it over the open frame.



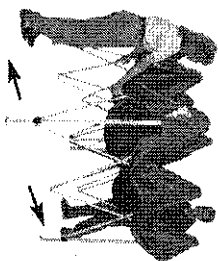
***3.** Attach the top to the E-Z UP® frame by matching the quick attachment strips on the top with the quick attachment strips on the frame. Pull the corners down fully. Push the strips firmly together at each corner.



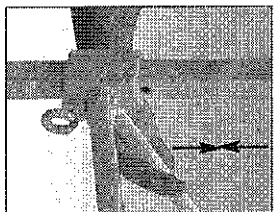
***4.** To secure the top to frame, line up grommet holes on valance with the bolts on frame.



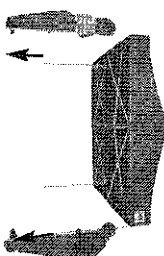
***5.** Unscrew top attachment nut from bolt. Place grommeted fabric top over the bolt, screw on top attachment nut and tighten until snug. **Top should rotate easily - do not over-tighten.** Repeat this procedure on the remaining grommets.



6. Grasp the bottom of the diamond shaped area of trusses on opposite sides. Lift up and step backwards until shelter is fully opened, being careful not to pinch fingers.



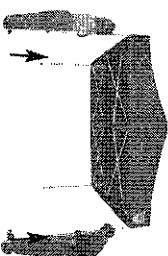
7. Engage the auto slider at each corner by pushing up with one hand while holding down the top of the leg with the other hand. The quick pin will engage the hole. Then pull down the hem of the top. Repeat at all four corners.



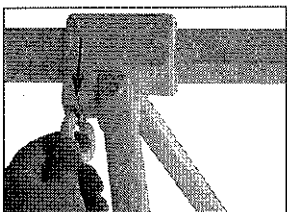
8. Lift two adjacent outer legs up 1" and slide out the inner legs until the toggle button locks. Repeat on the opposite legs - make sure to do two legs at a time.

Note: Once top is permanently attached, only perform steps 1 and 6 - 8 to set up.

HOW TO TAKE DOWN



1. With partner, slightly lift up two adjacent outer legs 1", depress toggle button and telescope inner legs into outer legs. Repeat on the opposite legs - making sure to do two legs at a time.



2. Release the auto slider at each corner by first lifting hem of top. With one hand, push up on truss near slider, release quick pin by pulling ring.



3. Grasp the top diamond on opposite sides by "close" sticker. Lift the shelter up slightly and shake it while stepping towards your partner until the unit is 3/4 closed. With each partner grasping two outer legs, push frame together to fully close it - Be careful not to pinch fingers. Store shelter in cover bag.